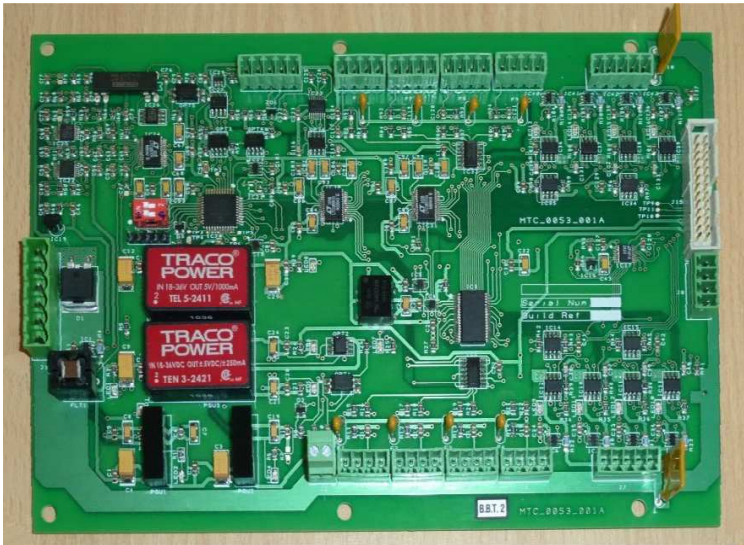


Intelligent Valve Pack Controller



Outline Specification

24 completely independent output channels with the following capabilities:

General:

- 1.5A @ 24V per channel.
- Over-current and over-temperature protected.
- Output current monitor.
- Fault condition monitor.
- Fly-back diodes on each channel.
- 10A Polyfuse on each group of 4 channels.
- Pairs of channels can be used for bi-directional valves.

Proportional Mode :

- Programmable 0..100% voltage control
- Programmable ramp rate (24V/s .. 1.2V/s)
- Programmable dither frequency (5Hz .. 250Hz)
- Programmable dither amplitude (0 .. 20% FSD)

Solenoid Mode:

- Programmable "hold" voltage 0..100%
- Programmable "pull-in" time 300ms .. 4s

ON-OFF Mode:

- Simple on-off control of output.

16 independent analog inputs with the following capabilities

Factory configurable 4..20mA, 0..5V or 0..10V on each input.
Factory configurable 12V or 24V sensor supply on each input.
200mA Polyfuse on each input.

Communications

MODBUS protocol
Isolated RS232 or RS485 interface
38400 baud rate

General

Supplied as a CONTROL and EXPANSION PCB pair.
Custom expansion PCBs available at special request.
24V, reverse polarity protected supply.
System PSU voltage monitoring.
System PSU current monitoring.
System temperature monitoring.
Water ingress detector.
Earth Leakage detector
CONTROL 210mm x 150mm, EXPANSION 210mm X 150mm

Software

Engineering GUI available for system commissioning.
Customised operator GUI available at special request.